

Instructions For Use

KITCHEN & BBQ Portable Dual-Timer

american innovative™

Mode Key

Tap the Mode key to cycle between the four modes: Countdown A, Countdown B, Stopwatch and Clock. Clock mode resumes automatically after 1 hour of inactivity.

Alert Option

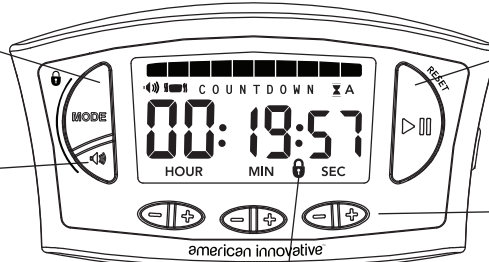
Tap the Alert key to choose your desired alert option while using Countdown A and/or B: buzzer, vibration or both.

Keypad Lock

To lock all keys in order to prevent accidental disruption, press and hold the Mode and Alert keys together for two (2) seconds. The padlock icon appears. Repeat this process to unlock.

Battery Replacement

Lift the battery door away from the housing using your fingernail (some force is required). Insert two new AAA batteries noting the orientation printed inside the battery compartment. Replace the door by first fully inserting the tab into the housing. Press the door downward to snap it securely into place.



Start | Pause (Reset)

Tap this key to start or pause the visible countdown timer or the stopwatch. Press and hold this key for two (2) seconds to reset to 00:00:00. During countdown timing, the elapsed time bar graphic decreases as timers are running. Each segment represents 1/10th of the total time entered.

Time Entry (+/-) Keys

For countdown timers, hours, minutes and seconds are easily entered using these keys. Press and hold to scroll rapidly.

Setting the Time

- 1) Using a paperclip, press and hold this button for 2-3 seconds. The timer enters "SET" mode and "12 Hr" flashes.
- 2) If desired, toggle between 12- and 24-hour clock mode by using the HOUR +/- keys.
- 3) Press the Start | Pause key to lock in your choice. The time flashes.
- 4) Use the Time Entry (+/-) keys to enter the correct time. Press and hold to scroll rapidly.
- 5) Press the Start | Pause key to lock in the correct time. The word "SET" disappears. Clock mode is resumed.

Care & Cleaning: Wipe timer clean using a soft, non-abrasive, damp cloth. Do not submerge timer in water.

